



INSTRUCTION BULLETIN

No. 9045126
Machine: S16
Published: 02-2022
Rev. 00

NOTE: DO NOT DISCARD the Parts List from the Instruction Bulletin. Place the Parts List in the appropriate place in the machine manual for future reference. Retaining the Parts List will make it easier to reorder individual parts and will save the cost of ordering an entire kit.

NOTE: Numbers in parenthesis () are reference numbers for parts listed in Bill of Materials.

Installation instructions for **kit number 9045125**

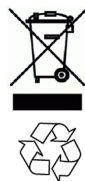
Kit installation must be performed by TennantTrue[®] service or an authorized service provider.

SYNOPSIS:

This kit contains the parts needed to replace the front sweep skirt hinge assembly on S16 sweepers. Please follow step-by-step instructions.

SPECIAL TOOLS / CONSIDERATIONS: Pop rivet tool

(Estimated time to complete: 45- 60 minutes)



PROTECT THE ENVIRONMENT

Please dispose of packaging materials, used machine components such as batteries and fluids in an environmentally safe way according to local waste disposal regulations.

Always remember to recycle.

PREPARATION:

FOR SAFETY: Before leaving or servicing machine, stop on level surface, turn off machine, and remove key.

INSTALLATION:

1. Release the main sweeping brush compartment access door and open the door to access the main sweep brush compartment. (Fig. 1)



FIG. 1

2. Remove the knobs securing the idler arm assembly to the main sweep assembly and remove the idler arm from the main sweep assembly. (Fig. 2/Fig. 3/Fig. 4)



FIG. 2

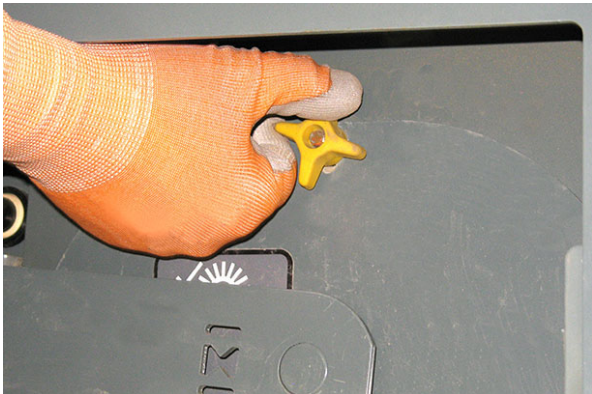


FIG. 3



FIG. 4

3. Remove the main sweep brush from the machine. (Fig. 5)



FIG. 5

4. Remove the cotter pin/clevis pin securing the large debris trap skirt to the sweep head. (Fig. 6)

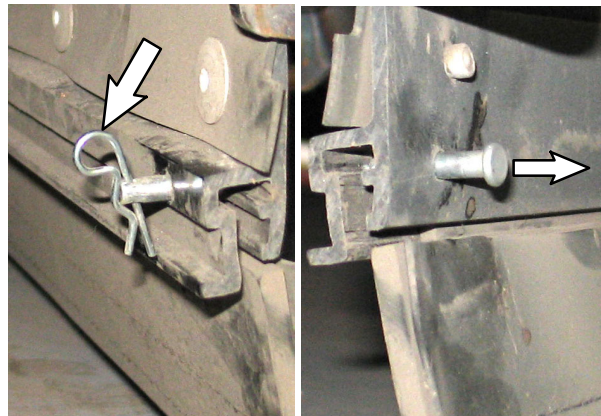


FIG. 6

5. Pull the sweep skirt/large debris trap skirt from the sweep head. (Fig. 7)



FIG. 7

NOTE: Machines equipped with left/right side brushes: If necessary, remove the left and right side brush to allow easier access to the sweep skirt hinge assembly and hardware securing the sweep skirt hinge assembly to the machine.

1. Remove the hardware (two hex screws/flat washers) securing the arm bracket to the linkage. Set the removed hardware aside. (Fig. 8)
2. Remove the hardware (four hex nuts/flat washers) securing the skirt hinge to the bracket retainer. Set the removed hardware aside. (Fig. 8)
3. Remove the flap hinge (skirt hinge/rail) assembly from the retainer bracket. Discard the removed components. (Fig. 8)
4. Use the eight rivets (3) to install the new skirt hinge (1) onto the new rail (2). (Fig. 8)
5. Install the hinge assembly (1)(2) onto the retainer bracket. Only finger tighten the hex screws. The hex screws are tightened after final adjustment. (Fig. 8)
6. Install the arm bracket onto the flap hinge assembly assembled in the previous step. (Fig. 8)
7. Install the main sweep skirt/large debris trap skirt onto hinge assembly (1)(2). (Fig. 8)
8. Position the sweep skirt/large debris trap skirt so the skirt end is rolled back toward the brush.
9. Turn key switch ON and propel machine forward approximately 24 in. (610 mm). Turn key switch OFF.
10. Observe the sweep skirt/large debris trap skirt. The sweep skirt/large debris trap skirt must not touch the floor by more than 0.125 in. (3.175 mm).
11. Adjust the hinge assembly (1)(2)/sweep skirt or large debris trap skirt on the retainer bracket as necessary and tighten the four hex screws. (Fig. 8)

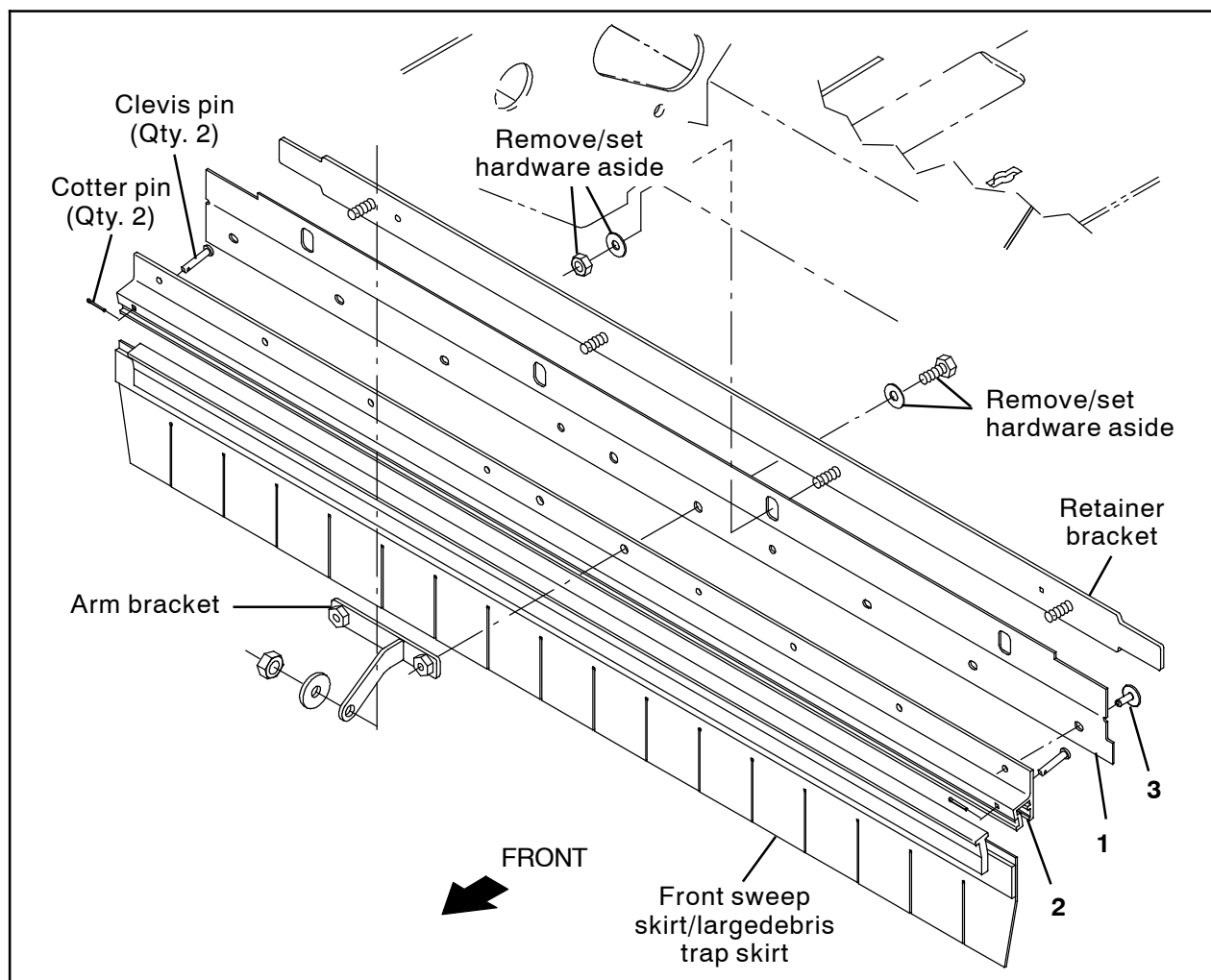


FIG. 8

12. Reinstall the main sweep brush into the main sweep brush compartment.
13. Reinstall the idler arm onto the main sweep brush compartment.
14. Reinstall the side brush/brushes if removed to install the sweep hinge kit.

15. Sweep with the machine brush pressure at the maximum pressure setting. Ensure the sweep skirt/large debris trap skirt is not getting caught in the main sweep brush while sweeping. Adjust the hinge assembly (1)(2)/sweep skirt or large debris trap skirt on the retainer bracket as necessary if the sweep skirt/large debris trap skirt is getting caught in the main sweep brush while sweeping.

Bill Of Materials For Hinge Kt, Swp, CI - 9045125

Ref.	Tennant Part No.	Description	Qty.
1	1252138	Skirt, Hinge	1
2	1252139	Rail, SI, T	1
3	32548	Rivet, Blind, .188D X 0.45 X .62D, Alm	8

TENNANT COMPANY
10400 Clean Street
Eden Prairie, MN 55344- 2650